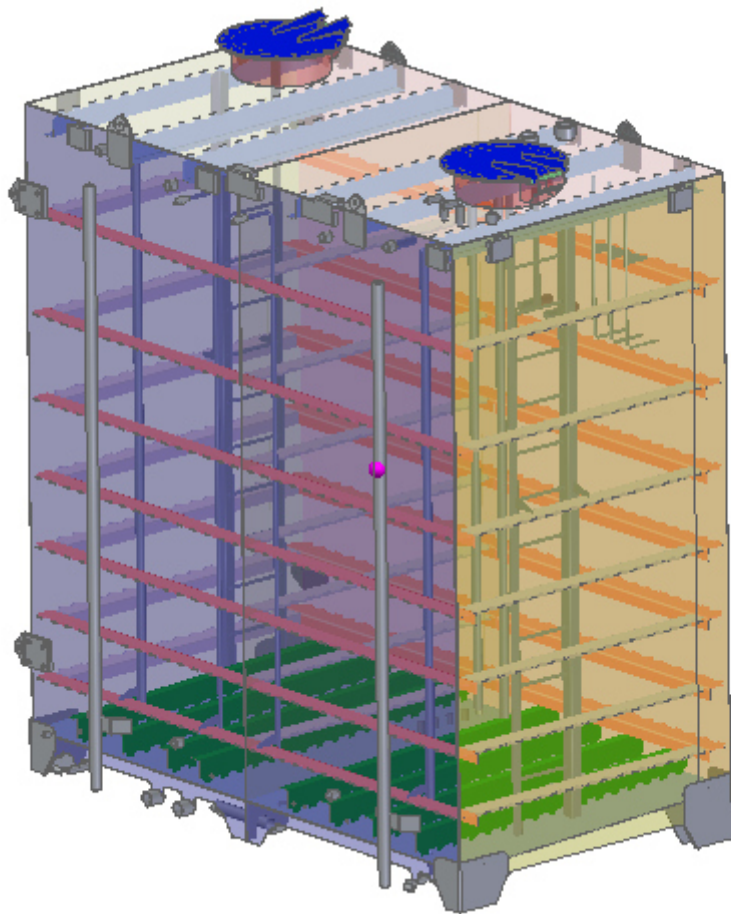


Customer:



Object:

Design Calculation Tank



DESIGNER:

Ing.

DOCUMENT DATE:

DOCUMENT TITLE:

INTRODUCTION

In this document will be calculated a rectangular tank.

The purpose of this calculation report is to verify the structural integrity of the rectangular tank in accordance with the AISC 14th (360-10) and Roark's 8th edition.
The calculation will be performed with the ASD method.

This technical documentation consists of n. **54** pages.

This report should be printed in colour.

Summary

INTRODUCTION	3
1. REFERENCE DOCUMENTS	5
1.1 Contractor documents.....	5
1.2 International codes and standards.....	5
2 TANK DESCRIPTION.....	6
3 GENERAL DATA.....	7
4 PLATES AND STIFFENERS VERIFICATION.....	9
5 OPENINGS VERIFICATION	24
6 LIFTING LUGS VERIFICATION	44
7 CONCLUSIONS.....	54

1. REFERENCE DOCUMENTS

1.1 Contractor documents

Ref	Title	Document Number	Rev
[1]	Rectangular Tank	119MD00101A00	00
[2]	Request For Quotation Tank	XXXXXXXXXXXXXXXXXXXXXX	00
[3]	SITE CONDITIONS DATASHEET	XXXXXXXXXXXXXXXXXXXXXX	B
[4]	GENERAL ARRANGEMENT TANK SUBSEA HPU	XXXXXXXXXXXXXXXXXXXXXX	B

1.2 International codes and standards

In the definition of the working criteria, in the assumption of the operating hypotheses and theoretical reference will be based on:

Ref	Title	Document Number
[5]	Roark's Formulas for Stress and Strain	8th edition
[6]	Steel Frame Design Manual	AISC 360-10
[7]	Rules for Construction of Pressure Vessel	ASME BPVC VIII Div.1-2013
[8]	Properties (Metric) Materials	ASME II Part D
[9]	Portable Offshore Units	DNVGL-ST-E 2.7-3
[10]	Eurocode 3: Design of steel structures Part 1-1: General - General rules and rules for buildings	ENV 1993-1-1
[11]	Eurocode 3: Design of steel structures Part 1-8: Design of joints	EN 1993-1-8

2 TANK DESCRIPTION

The section provides a brief description of the components of the rectangular tank treated in this document.

In Figure 3-1 are highlighted the main items for all rectangular tank.

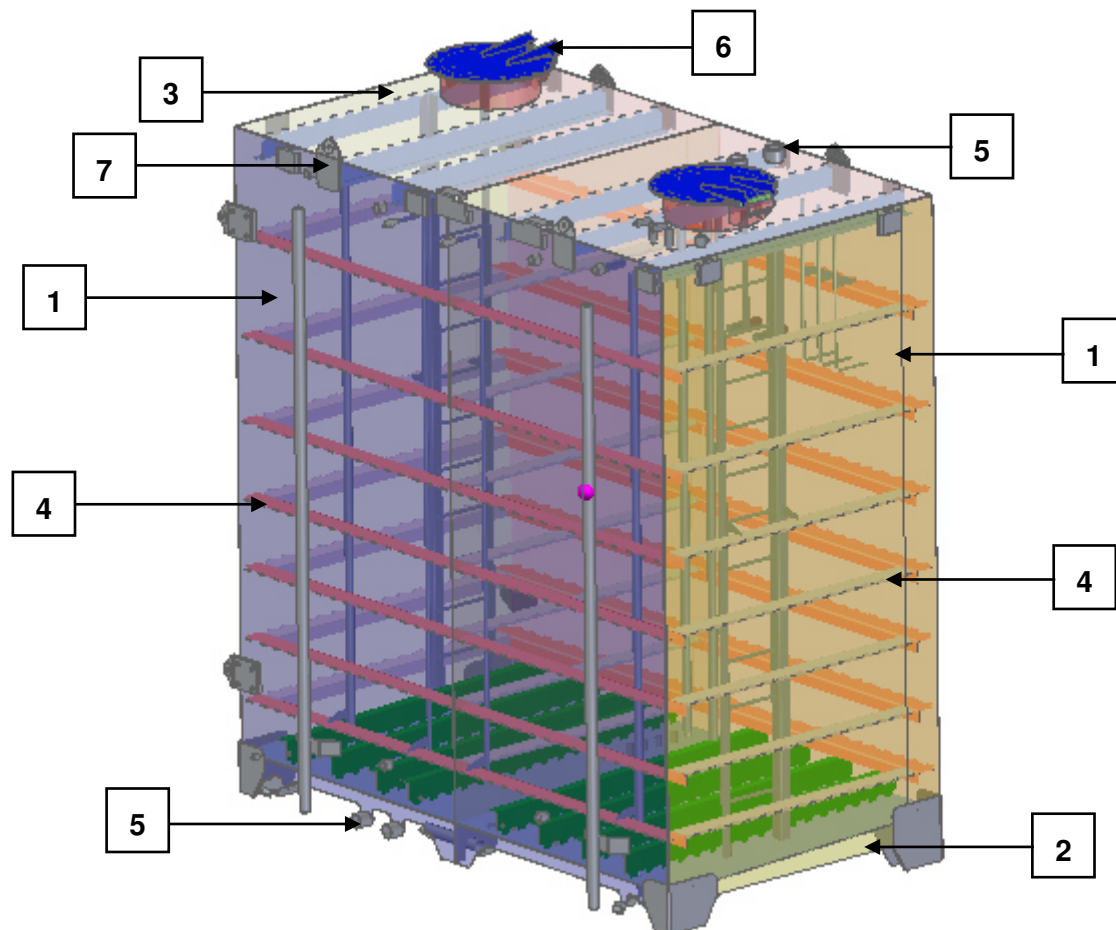


Figure 3-1: Typical rectangular tank model

- | | |
|-------------------------|----------------|
| 1. Side wall plate | 5. Nozzle |
| 2. Bottom plate | 6. Manhole |
| 3. Roof plate | 7. Lifting lug |
| 4. Horizontal stiffener | |